



K I T T A R

Manual

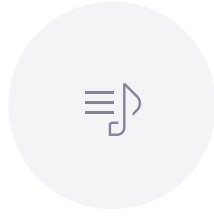
Overview of Kittar

Kittar is a music app that lets you enjoy playing music phrase by phrase. Choose a song saved on your iPhone, iPad and iPod touch and the app will automatically generate a "phrase list" based on the song's structure. The app is perfect for having fun with performing a song partially, accompanied by the original song.



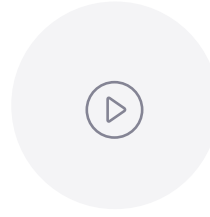
Choose a song

Choose the song you want to play from the songs saved on your iPhone/iPad/iPod touch.



Choose a phrase list

Select the phrase list you want to play.



Play a phrase

Choose and play the phrase you want to hear.



Edit the phrase list

Freely edit the phrase list to match your playing style.

Side Menu

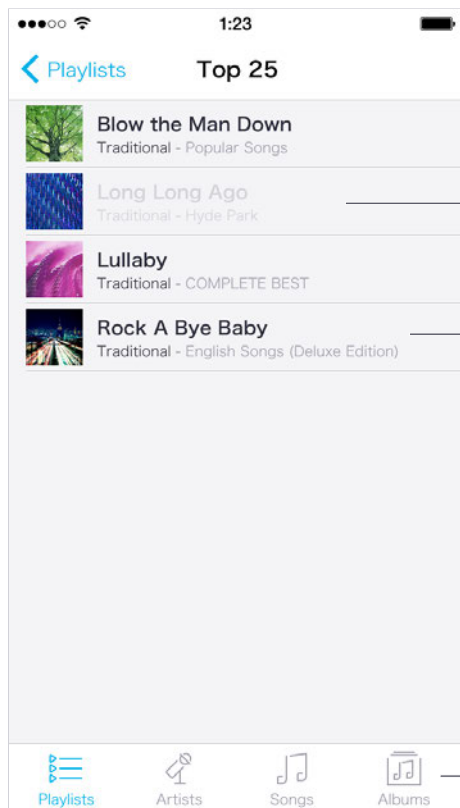
The screenshot shows the Kittar app interface. At the top, the status bar displays the time 1:23 and battery level. Below it, a hamburger menu icon is labeled "Select Phrase List". The main menu is a dark vertical bar with the following items:

- Recently Played Songs**: A callout points to this item with the text "Displays a list of recently played songs (up to 50)."
- Favorite Phrases**: A callout points to this item with the text "Displays a list of phrases marked as favorite."
- Select from Music Library**
- About This App**

At the bottom of the menu, there is a song information section for "Melody A" by "Kittar Phrase List" (Lullaby - Traditional-COMPL...). A callout points to this section with the text "Song information Tap one of the phrase lists displayed to move to 'Phrase List'". Below the song information is a "Play / Stop" button.

Select from Music Library

A list of the songs stored on your iPhone, iPad and iPod touch is displayed.



Unsupported song
* For details see the notice below.

When you select a song, the screen changes to 'Select Phrase List'

Browse songs by playlist, artist, song title or album

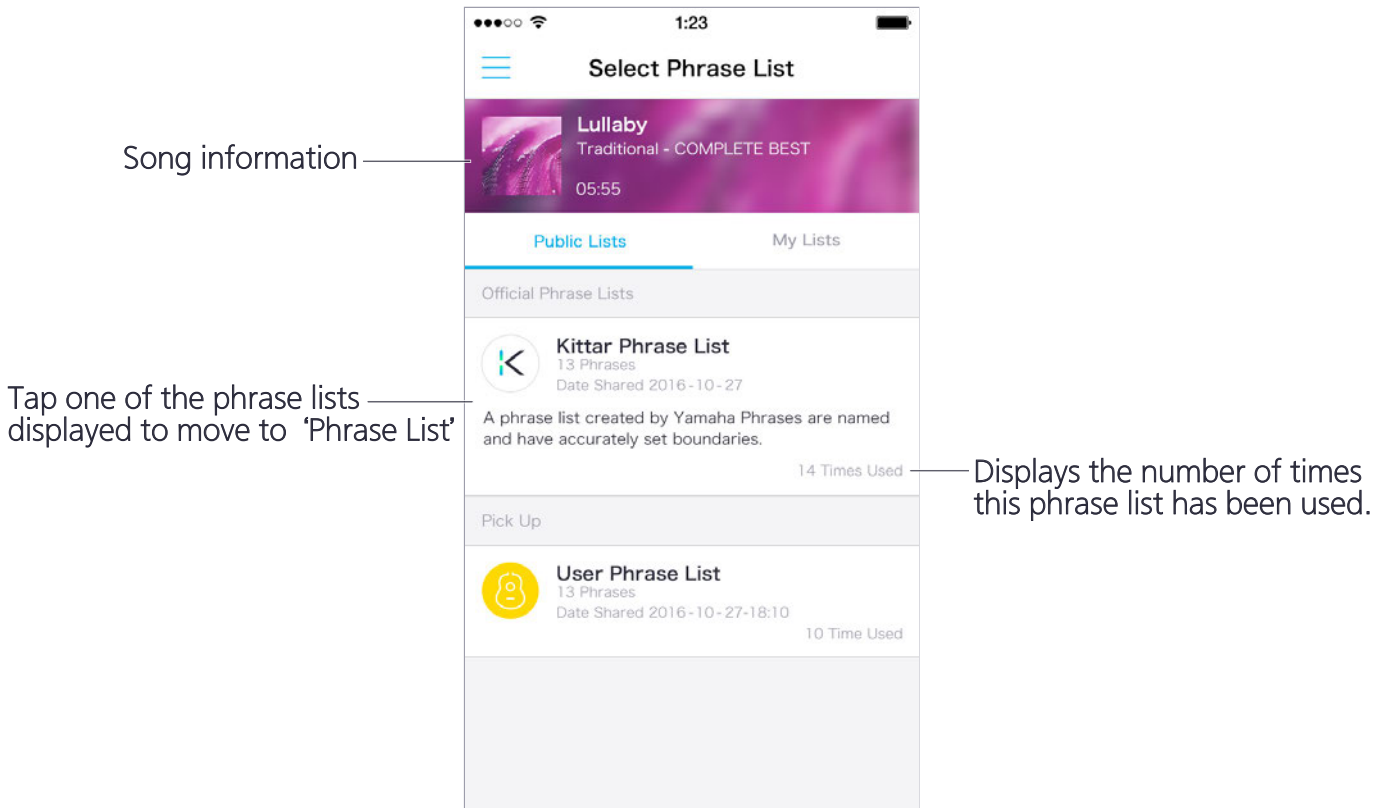
Notice:

The following types of songs are not supported and cannot be selected.

- Songs stored in iCloud
 - Protected by digital rights management (DRM)
 - songs over 40 minutes long
-

Select Phrase List - Public Lists

Displays phrase lists for the song selected.



Official Phrase Lists :

Displays public phrase lists distributed by Yamaha.

The types of phrase lists displayed vary according to songs selection.

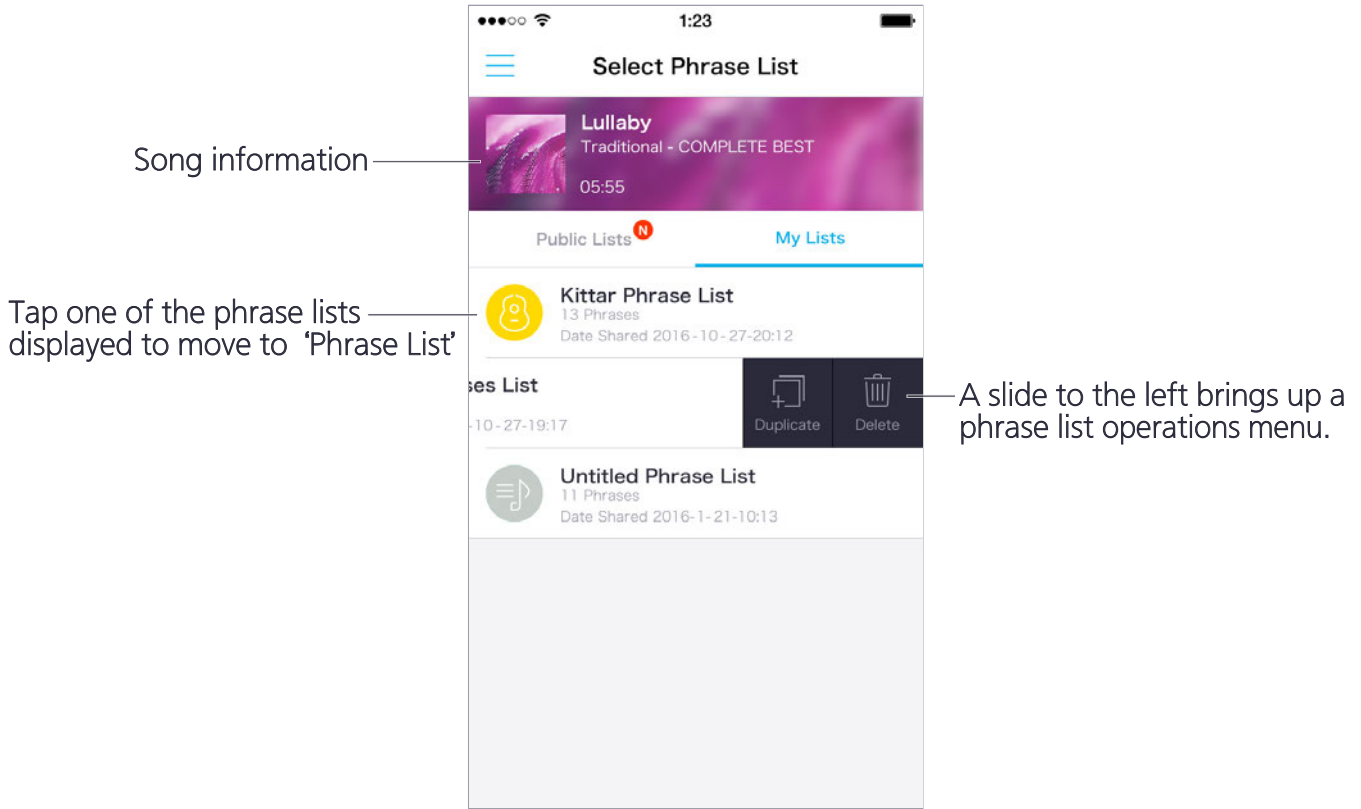
Pick Up :

Displays phrase lists actually used by people performing the song.

*Not all phrase lists are displayed. To cancel data sharing, open ' About This App' on the side menu, select ' Data Sharing' and switch 'Data Sharing Setting' to OFF.

Select Phrase List -My Lists

Distributed phrase lists selected, played, and edited are automatically saved.

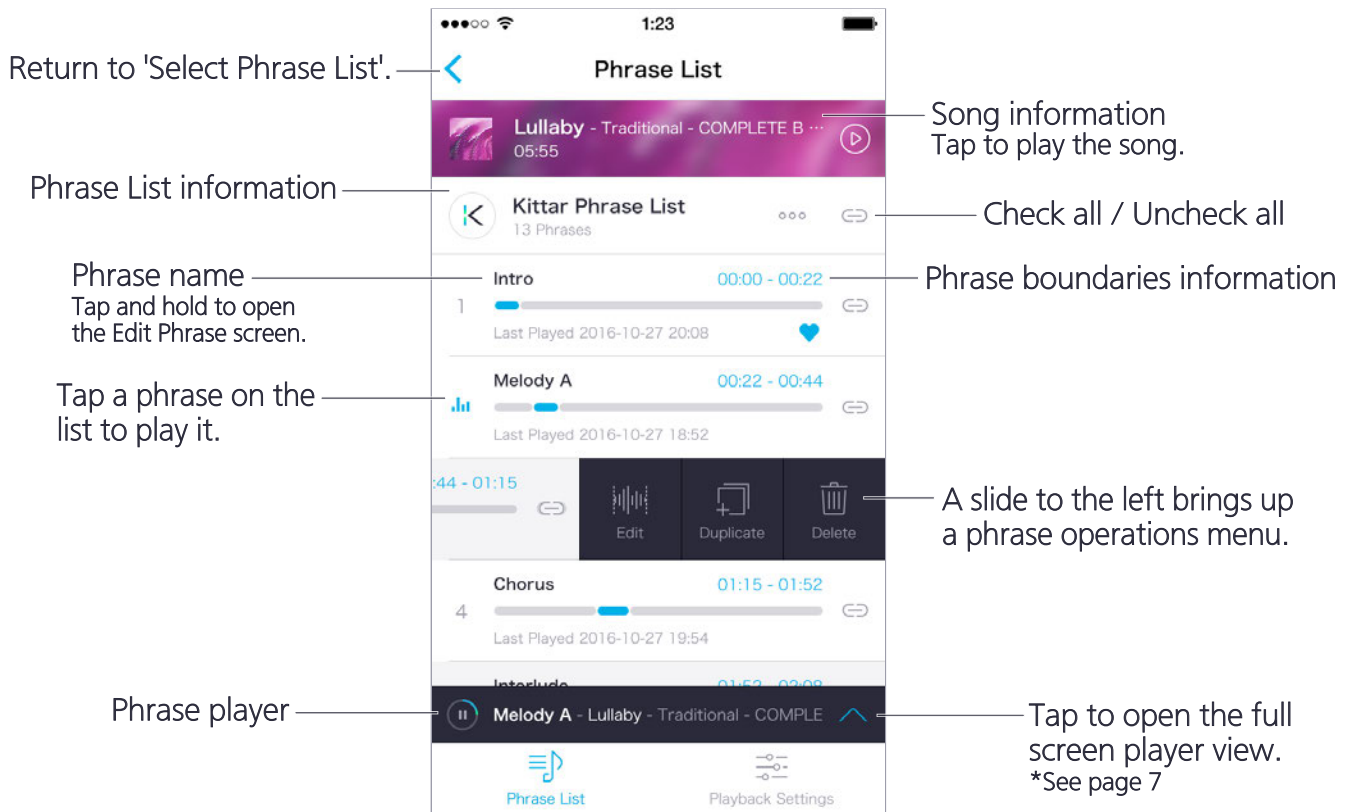


icon		Explanation
	Badge	This icon is displayed when the distributed phrase lists are updated.
	Duplicate	Copy phrase list
	Delete	Delete phrase list

For customers of Version 1.3 and earlier
Phrase lists used before the update are named 'Untitled Phrase Lists' and saved in 'My Lists'.

Phrase List

After selecting a song from the music library, a phrase list is automatically generated and displayed.



icon		Explanation
	Group	Tap the icon to add a phrase into a group and play only the grouped phrases (⇄). Tap again to remove the phrase from the group (⇄).
	Edit	Open the Edit Phrase screen to edit phrase name and boundaries.
	Duplicate	Copy phrase
	Delete	Delete phrase
	Playback Settings	Open the Playback Settings page to edit volume, count-in and transposing.
	Menu	Open the menu to add, sort or reset phrases.

Add Phrase :

Opens the Edit Phrase screen, where you can create new phrases and edit existing ones.
*See page 8 for how to use the Edit Phrase screen.

Reorder Phrases :

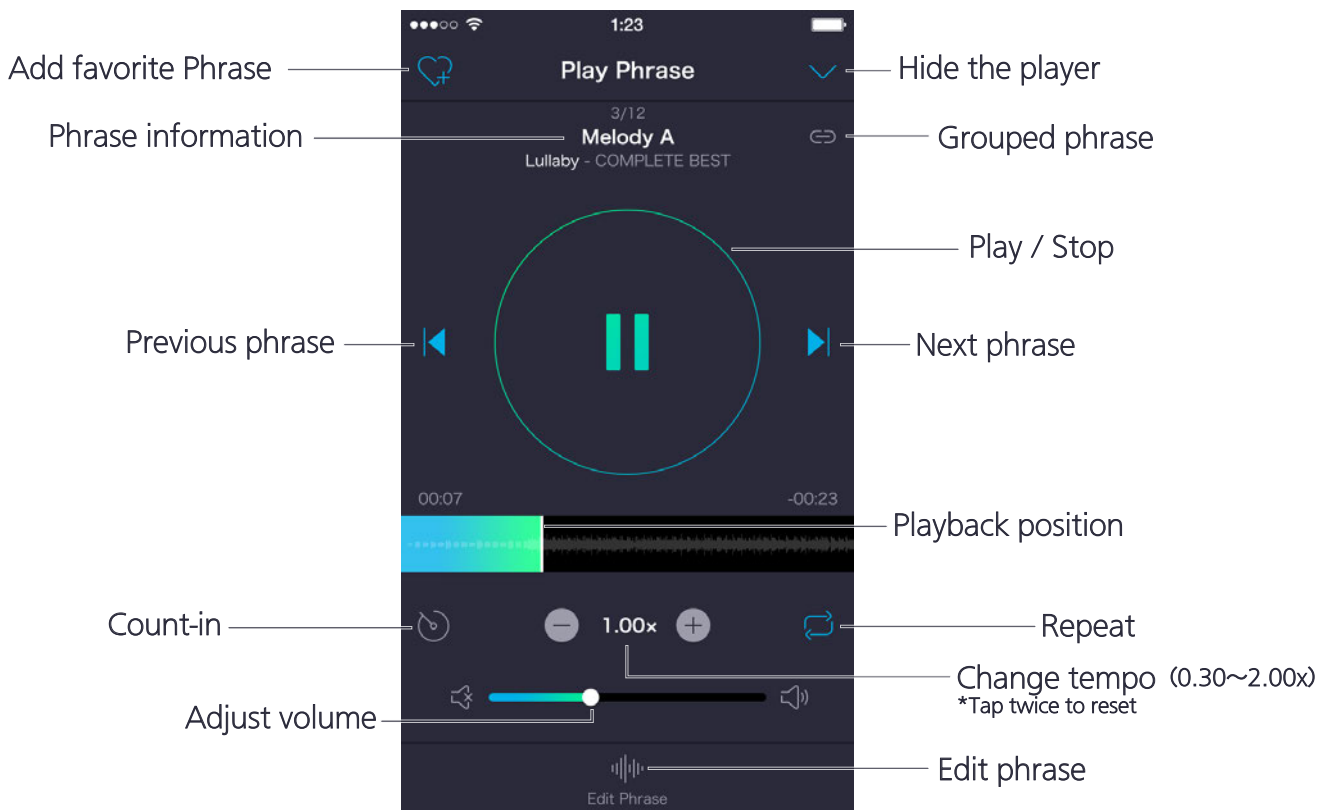
The order of the phrases can be changed by dragging (≡). Tap "Finish" on the top right of the screen when sorting is complete.





Edit phrase list info :

You can change the names of the phrase lists and musical instrument category icons.

Phrase Player

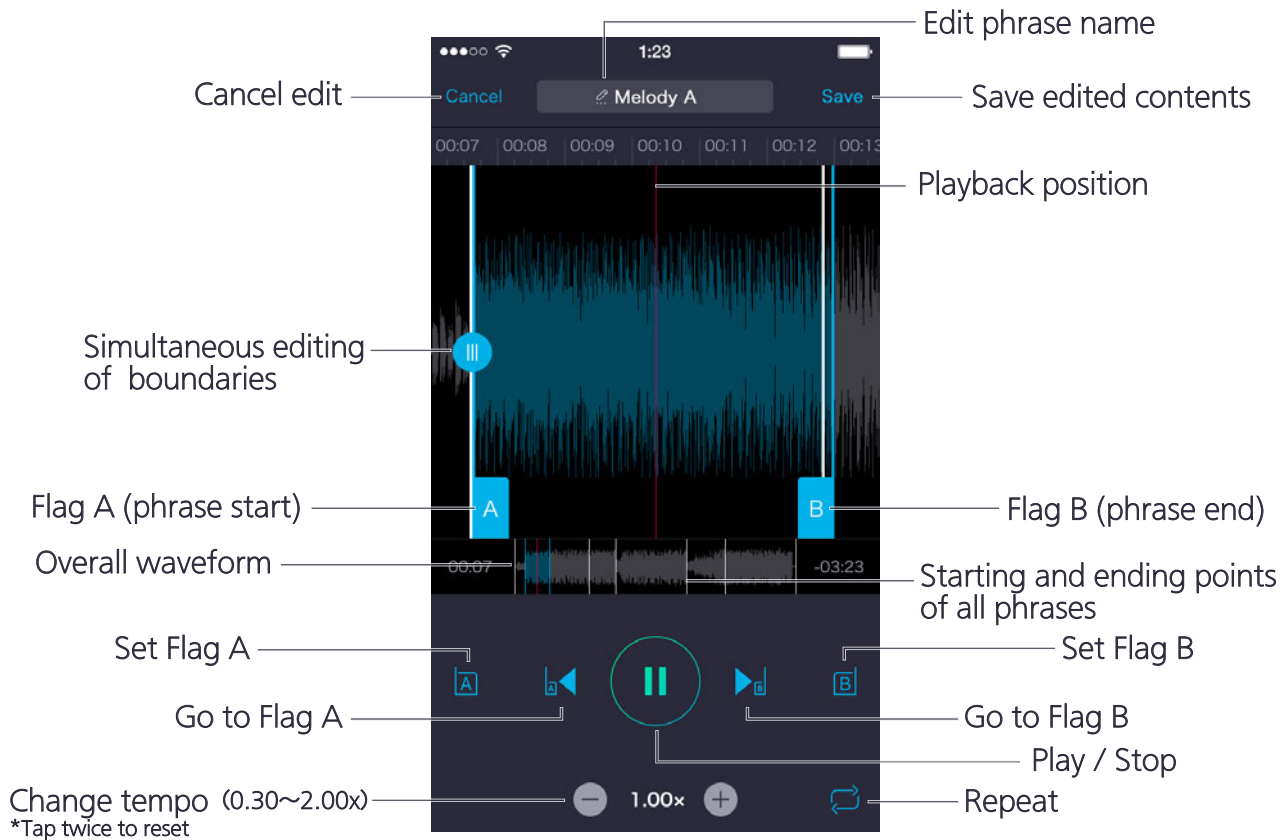
Play music and adjust related settings.



icon		Explanation
	Count-in	Start playback from before the start of the phrase. The time can be adjusted from 1 second to 5 seconds in Playback Settings.
	Repeat	Play the phrase repeatedly. If the phrase has been added into a group, all phrases in the group will be played, after which playback will loop back to the first phrase.
	Add favorite phrase	Add phrase to the list of favorite phrases.
	Edit phrase	Open the Edit Phrase screen and edit the phrase name and boundaries.

Edit phrase

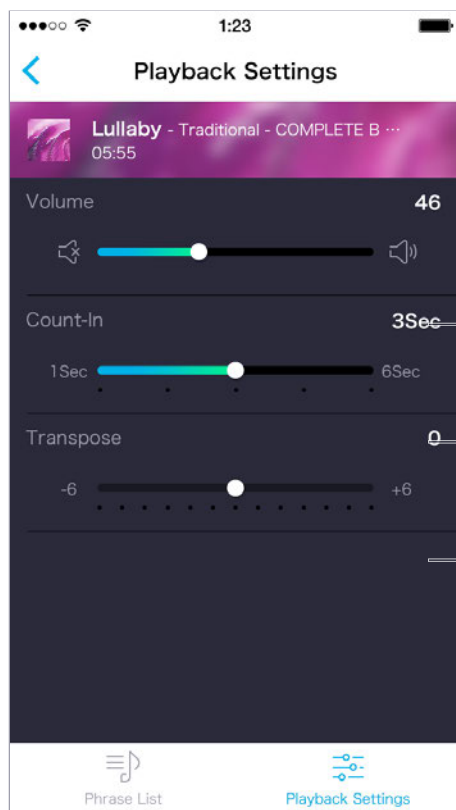
Edit the name and boundaries of the selected phrase. It is also possible to create a new phrase covering the section you want.



icon		Explanation
	Flag A/B	Drag to adjust the starting point (A) and ending point (B) of the phrase.
	Set Flag A/B	Sets Flag A / B to the current playback position.
	Go to Flag A/B	Begins playback from the position of Flag A / B.
	Simultaneous editing of boundaries	Drag to simultaneously edit the starting / ending point of the next / previous phrase.
	Repeat	Play the phrase repeatedly.
	Edit phrase name	Edit the phrase name. You can either choose one of the suggested names or insert an original name.

Playback Settings

Edit parameters related to music playback.



Adjust volume

Change the number of seconds for count-in.
(Begin playback from before the start of the phrase)

Change key

- This software and its manual are the exclusive copyright of Yamaha Corporation.
- Copying of this software or reproduction of its manual in whole or in part by any means is expressly forbidden without the written consent of the manufacturer.
- Yamaha makes no representations or warranties with regard to the use of this software and its manual and cannot be held responsible for the results of use thereof.
- The screen displays shown in this manual are for instructional purposes only and may appear somewhat different from those on your device.
- iPhone,iPad,iPod touch and iTunes are trademarks of Apple Inc. registered in the United States and other countries.